

# 2022 Canadian Championship

Bay of Quinte Yacht Club

June 24-26 2022

Belleville, ON



*This Counter Regatta is sanctioned by the  
Canadian Shark Class Association*

## **ATTACHMENT A to Initial Release ~ March 21, 2019 of the CSCA STANDARD SAILING INSTRUCTIONS (SSI)**

### **2 NOTICES TO COMPETITORS**

Notices to competitors will be posted on the official notice board(s) located at the south window of the BQYC Clubhouse.

### **4 SIGNALS MADE ASHORE**

Signals made ashore will be displayed at the club's flagpole on the south side of the clubhouse.

### **7 RACING AREAS**

Attachment C shows the location of racing areas.

**7.1** Course Area 1 - Belleville Bay East of the bridge to Pr. Edward County

**7.2** Course Area 2 - Belleville Bay West of the bridge to Pr. Edward County

**7.3** Course Area 3 - Big Bay – (approx. 5 nm east of the club)

**7.4** The race area for the day will be announced at the skippers meeting and posted on the Notice to Competitors window.

### **8 THE COURSES**

**8.1** Course diagrams are in Attachment B. These replace the RRS Course Diagrams

### **9 MARKS**

**9.1** Marks 1, 2p and 2s will be Orange Tetrahedrons.

**9.2** The offset mark 1a will be a Red Ball.

**9.3** New marks as provided in instruction 12.1 will be Yellow.

**9.4** The starting marks will be the race committee signal boat at the starboard end and a Light Orange Cylinder at the port end.

**9.5** The finishing marks will be the race committee signal boat at the starboard end and an Orange Cylinder at the port end.

### **10 OBSTRUCTIONS**

**10.1** The following areas are designated as obstructions: Be aware of navigation marks when sailing to the racing areas

## **11 THE START**

- 11.1** The starting line will be between a staff displaying an orange flag on the starboard end signal boat and the course side of the port-end starting mark.
- 11.2** A boat that does not start within 5 minutes after her starting signal will be scored Did Not Start without a hearing. This changes RRS A4 and SSI 11.2.

## **12 CHANGE OF THE NEXT LEG OF THE COURSE**

- 12.1** To change the next leg of the course, the race committee will move the original mark (or the finishing line) to a new position. This changes SSI 12.1.

## **13 THE FINISH**

- 13.1** The finishing line will be between a staff displaying a blue flag on the starboard end signal boat and the course side of the port-end finishing mark.


## **14 TIME LIMITS AND TARGET TIMES**

- 14.1** The time for the first boat to pass Mark 1 is changed to 20 minutes.

## **15 PROTESTS AND REQUESTS FOR REDRESS**


- 15.1** The race office is located beside the main BQYC club door.
- 15.3** The protest room is located at the North-West end of the BQYC club house.

# Attachment B



**Course: Leeward Finish**

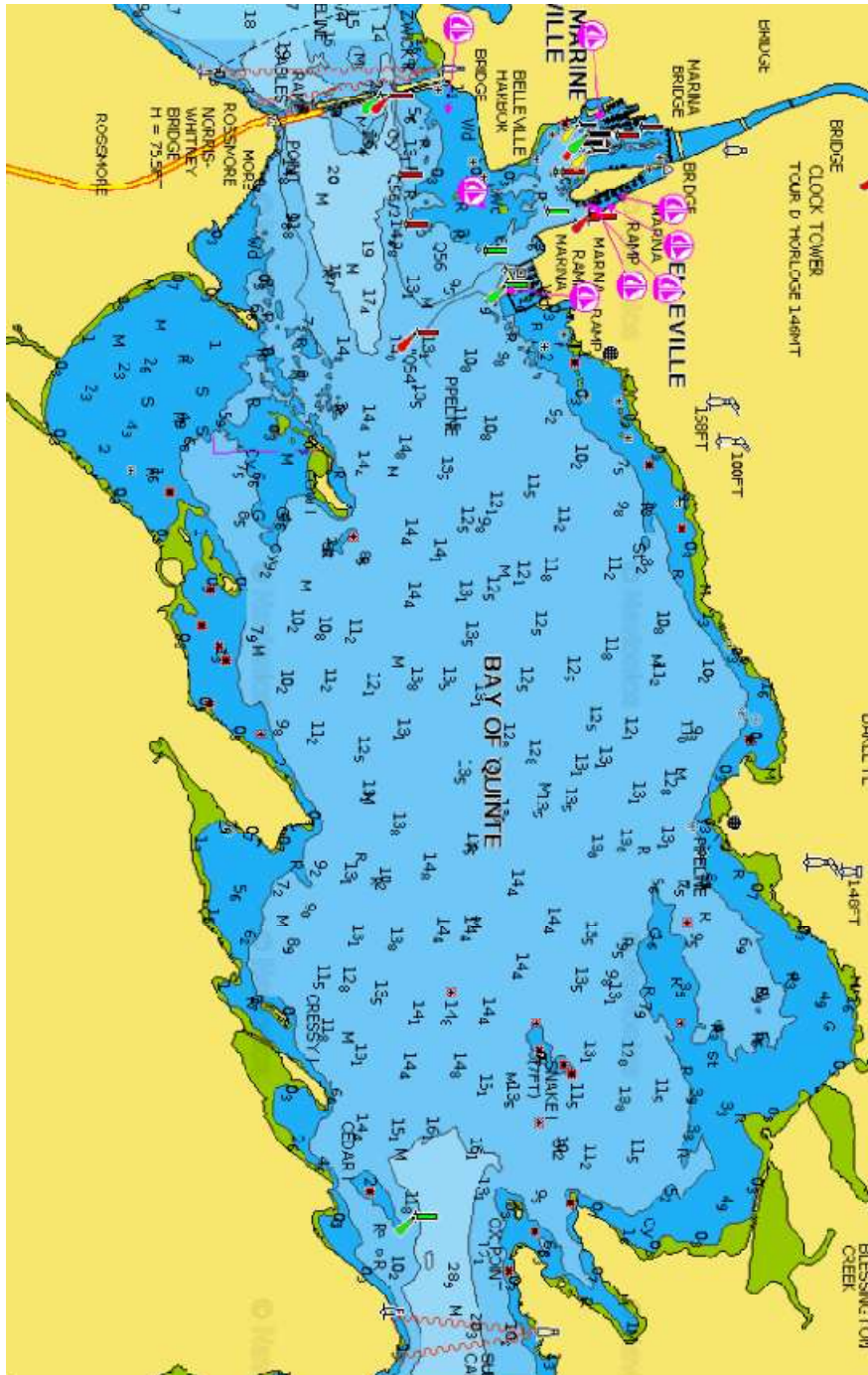
Signal	Mark Rounding Order
LA2	Start - 1 - 1a - 2p/2s - 1 - 1a - Finish
LA3	Start - 1 - 1a - 2p/2s - 1 - 1a - 2p/2s - 1 - 1a - Finish
LA4	Start - 1 - 1a - 2p/2s - 1 - 1a - 2p/2s - 1 - 1a - 2p/2s - 1 - 1a - Finish



**Course: Windward Finish**

Signal	Mark Rounding Order
WA2	Start - 1 - 1a - 2p/2s - Finish
WA3	Start - 1 - 1a - 2p/2s - 1 - 1a - 2p/2s - Finish
WA4	Start - 1 - 1a - 2p/2s - 1 - 1a - 2p/2s - 1 - 1a - 2p/2s - Finish

# Area 1



# Area 2

